

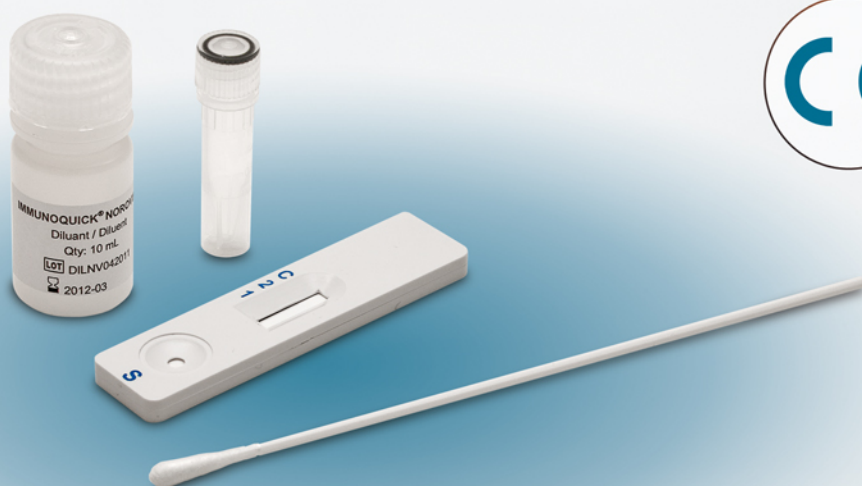
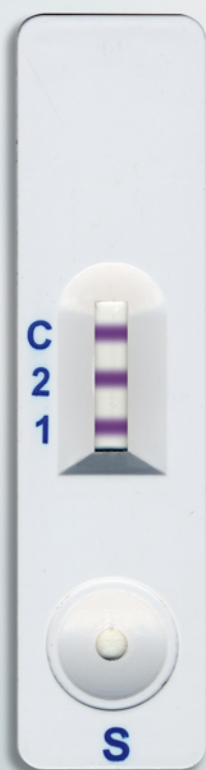
REF :

0529_K10

IMMUNOQUICK®

NOROVIRUS

IMMUNOQUICK® NOROVIRUS is an immunochromatographic rapid test for qualitative detection of Norovirus in stool samples.



▶ RELIABLE

- Quality system certified ISO 9001/13485.
- Sensitivity : **95,65%**.
- Specificity : **91,67%**.

▶ EFFICIENT

- Dual detection of :
 - genogroup I,
 - genogroup II.
- Fast : result within **15 minutes**.
- Shelf life : **12 months**.

▶ PRACTICAL

- Tubes for sample extraction available.
- Ergonomic devices.
- Objective reading : presence or absence of color bands.
- One step assay.

▶ PACKAGING

- Ref 0529_K10 : kit of **10 tests** containing :
 - 10 cassettes in individual pouch,
 - 1 vial of extraction solution,
 - 10 swabs,
 - 10 extraction tubes.

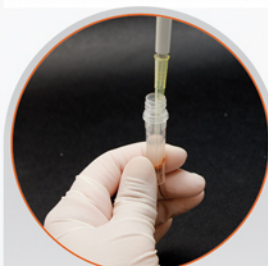
PROCEDURE



1 → Add with the swab about 50mg of stool specimen (50µL of liquid feces) into the tube and add 0.8 mL of extraction solution.



2 → Let stand 3 minutes or centrifuge at 3000xg for 10 minutes.



3 → Take 80µL of specimen supernatant with a micropipette.



4 → Transfer into sample well of device.

5 → Read at the 15th minute. Do not interpret after 15 minutes.

PERFORMANCES

● A comparison study with the RT-PCR method was performed.

		IMMUNOQUICK® NOROVIRUS		
		Positive	Negative	Total
RT PCR	Positive	44	2	46
	Negative	2	22	24
	Total	46	24	70

- Sensitivity : 95,65% (44/46)

- Specificity : 91,67% (22/24)

PRINCIPLE

● IMMUNOQUICK NOROVIRUS is a qualitative, lateral flow immunoassay for the detection of Norovirus antigens (genogroups I and II) in stool.

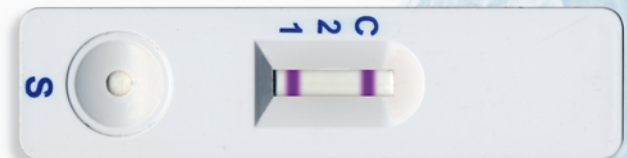
Noroviruses are a major cause of acute gastroenteritis. They are highly contagious, with an inoculum of as few as ten particles being able to cause infection.

Transmission occurs through ingesting contaminated food and water and by person-to-person spread.

Transmission is predominantly faecal-oral but may be airborne due to aerosolisation of vomitus, which typically contains abundant infectious virus particles.

The illness is acute, usually mild, although it has caused fatalities among the elderly, it follows an incubation period of 24-48 hours although cases can occur within 12 hours of exposure.

INTERPRETATION



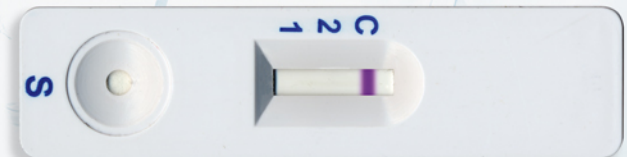
● **POSITIVE for genogroup I.**

The presence of two color bands at T1 and C zones within the result window indicates a positive result. Presence of Norovirus genogroup I in the sample.



● **POSITIVE for genogroup II.**

The presence of two color bands at T2 and C zones within the result window indicates a positive result. Presence of Norovirus genogroup II in the sample.



● **NEGATIVE.**

The presence of only one control band in the control reaction zone C and no band at the level of the Test zones T1 and T2 indicates a negative result.



● **INVALID.**

If no control band appears in the result window after performing test, the result is considered invalid. The instructions may not have been followed correctly or the strip may have been deteriorated. It is recommended that the specimen be re-tested with a new device.